

PHASE 1 - FEASIBILITY ANALYSIS

Genesee Street

(Park Ave. to Mountain Ave.)

The condition of Genesee street is typical for the immediate grouping of side streets between Park Ave. and Mountain Ave. Genesee street is in need of reconstruction and is in worse overall condition compared to Cambridge Street.

The pavement surface suffers from extensive alligator cracking and differential settlement. The base of the road is exposed in several 'pothole' areas as highlighted in photo 8. Extensive alligator cracking can be seen in photos 4, 5 and 6 & the differential settlement is obvious in photo 7.

The street does have granite curbing throughout and the granite is in surprisingly good condition considering the condition of curbing on adjacent streets. While the curbing does show some rolling and settlement, a reveal of appx 4-5" exists which is adequate to control stormwater, which drains to a low point in the middle of the road. The condition of the existing asphalt sidewalks vary; the majority of the sidewalks are in good condition although appx. 20% of the sidewalks are in poor condition.

Ultimately the curbing should be removed and reset and the sidewalks be reconstructed in concrete. Due to the fact that macadam is exposed beneath the top layer of asphalt and that differential settlement is observed, the integrity of the base of the road as a whole is questionable.

It is recommend that full depth reclamation of the road ultimately be completed concurrently with the resetting of the granite curb and reconstruction of the sidewalks in concrete.

Genesee Street

Looking north to Mountain Ave.

Photo shows typical condition of roadway,
alligator cracking is extensive.

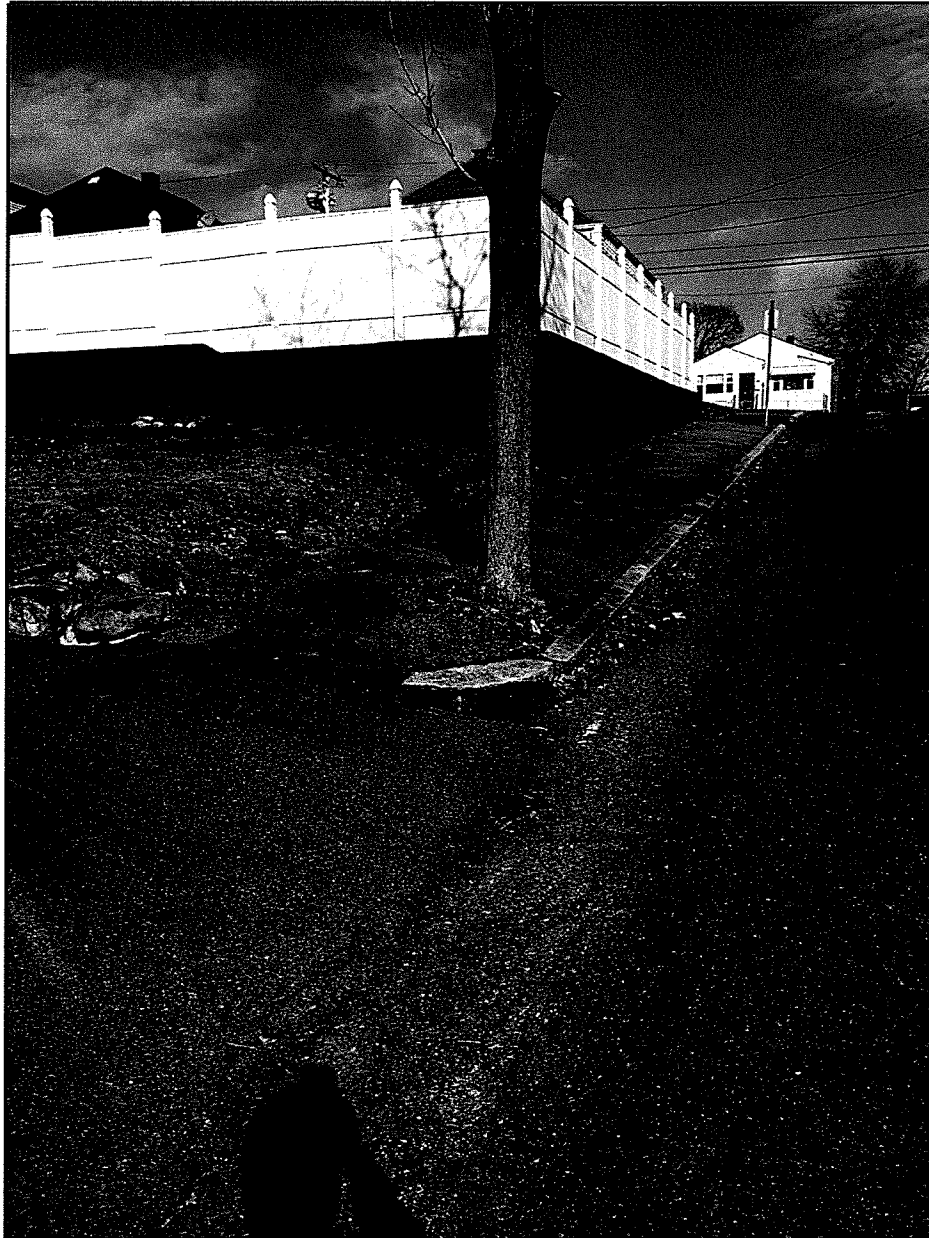
Driveway curb stones do not taper down to
grade at many driveways on this street.



Genesee Street

Looking north towards Mountain Ave.

Tree roots protruding out of the sidewalk.
Note corner stone at this driveway,
driveways are inconsistent.



Genesee Street

Looking north towards Mountain Ave.

Photo shows section of poor sidewalk.

Note, water service curb stop protruding out of asphalt due to settlement of walks. This tripping hazard exists in more than one location on this street.



Genesee Street

Looking south towards Park Ave.

Photo shows poor condition of roadway. Extensive settlement, alligator cracking and pothole repairs. Condition of the road base is questionable.

Note inconsistency of driveway stones.



Genesee Street

Looking south towards Park Ave.
(One driveway south of last picture)

Photo shows poor condition of roadway.
Extensive settlement, alligator cracking and
pothole repairs. Condition of the road base
is questionable.



Genesee Street

Looking north towards Mountain Ave.

Photo shows same roadway location from opposite side. Note inconsistencies in asphalt sidewalk. Curb 'rolling' over towards street. Curbing should be removed and reset in concrete.

Existing walks do not meet ADA cross slope requirements, resetting of curbing will help alleviate this issue by raising the front of the walkways.

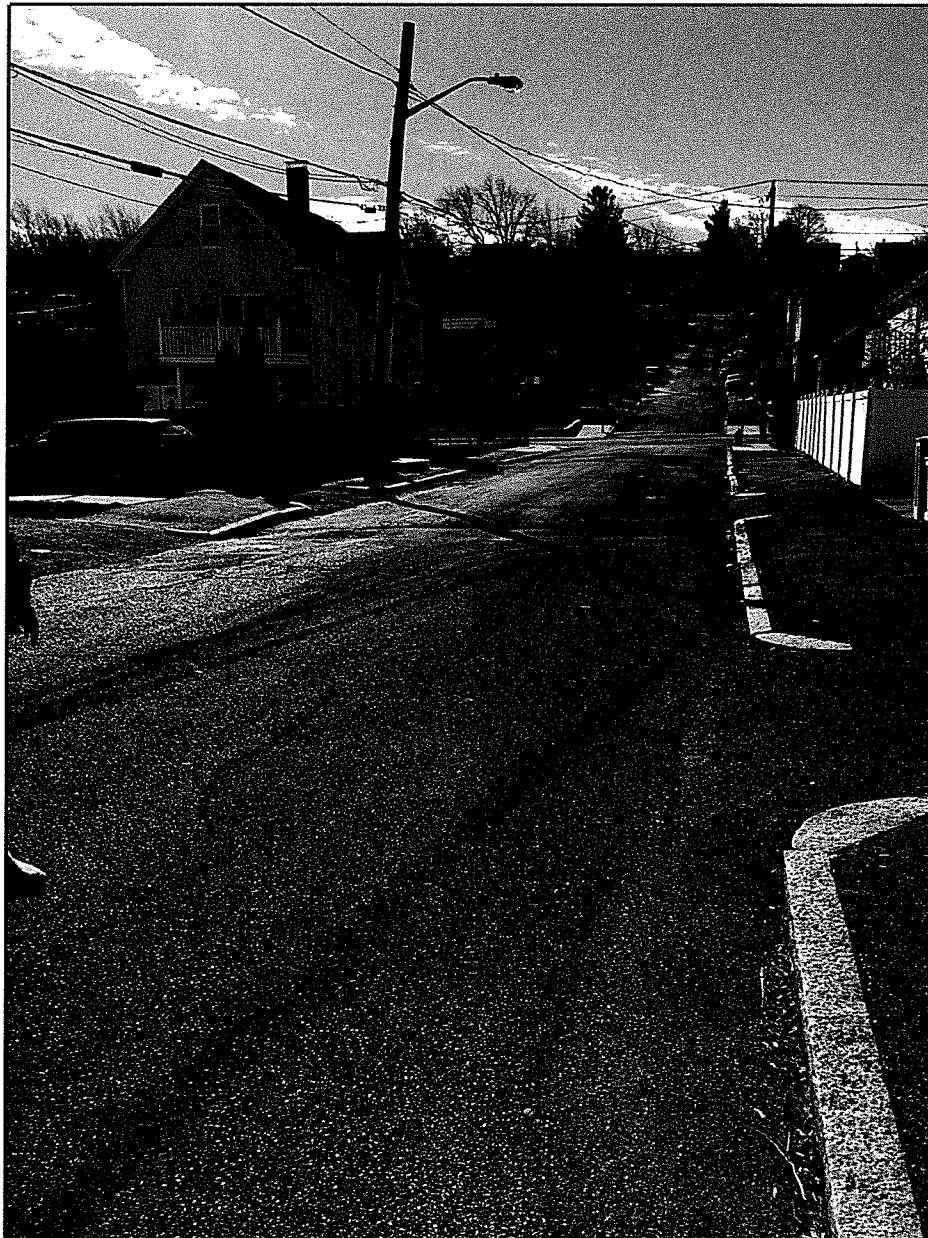


Genesee Street

Looking south towards Park Ave.

Photo highlighting typical condition of curb. Extensive settlement and 'rolling' over of curb present on the street. Sidewalks in poor condition.

Curb should be removed and reset in concrete.



Genesee Street

Photo of failed roadway surface.

Note exposed macadam. Typical in this group of side streets between Mountain and Park Ave.

If milled, roadway surface will be down to macadam base. If roadway is milled macadam will likely become exposed. Will require level course, binder and top course of pavement

